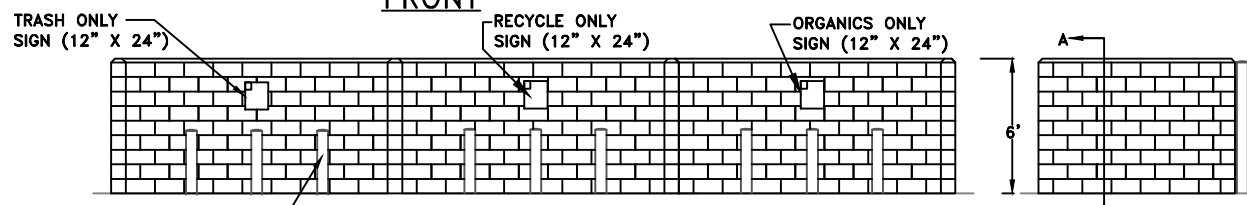


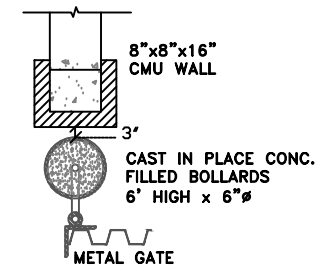
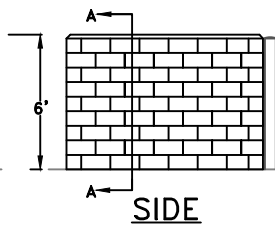
NOTES:

1. SINGLE ENCLOSURE IS 12' WIDE (INTERIOR)
2. THE EXTERIOR FINISH AND COLOR OF THE ENCLOSURE SHALL MATCH THE BUILDING PER THE DESIGN REVIEW PERMIT EXHIBITS AND/OR CONDITIONS OF APPROVAL
3. GREASE/TALLOW BIN ENCLOSURE MAY BE ATTACHED TO THE TRASH ENCLOSURE OR BE CONSTRUCTED SEPARATELY. THE GREASE/TALLOW BIN MUST NOT BE LOCATED WITHIN THE TRASH/RECYCLING ENCLOSURE.
4. NO. 4 REBAR, 12 INCHES O.C. EACH WAY, 3 INCH DOBIES WITH WIRE TIES AT 3' INTERVALS, EACH WAY.



6' x 6"Ø CONC. FILLED BOLLARDS AT 3' O.C. (3' HIGH, 3' BURIED BELOW GROUND). SEE DETAIL ST-38A

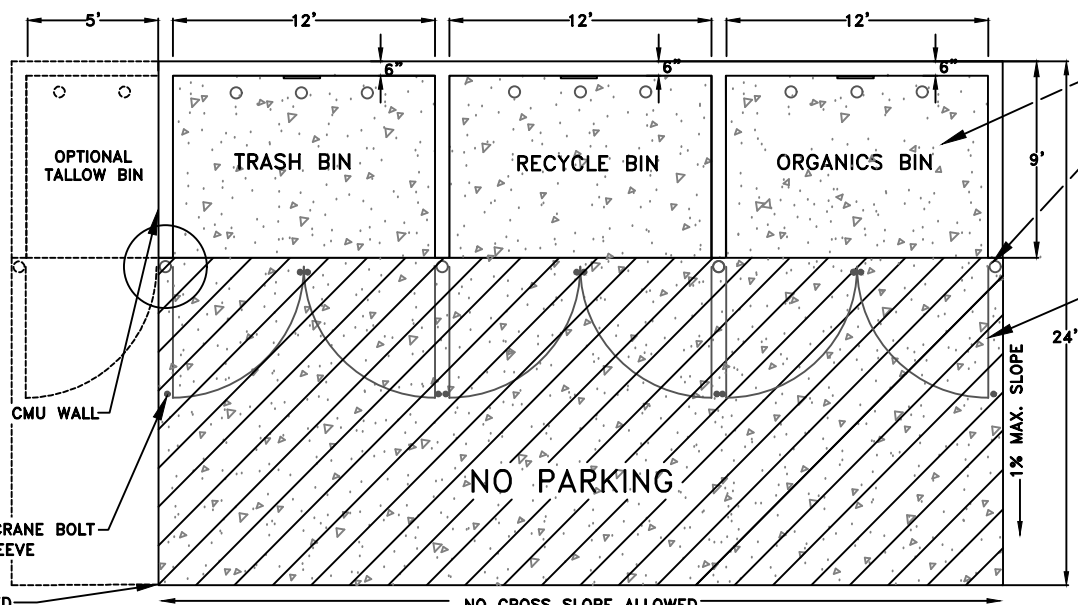
SECTION A
BOLLARD CONFIGURATION



BOLLARD GATE
DETAIL

Richard D. Plecker

RICHARD PLECKER
ENVIRONMENTAL UTILITIES DIRECTOR



8"x8"x16" CMU WALL
2" DIA. CRANE BOLT REC'Y SLEEVE

REINFORCED CONCRETE APPROACH AND INTERIOR SHALL BE 6" THICK MIN. PAINTED "NO PARKING" 12" LETTERS WITH 4" DIAGONAL LINES

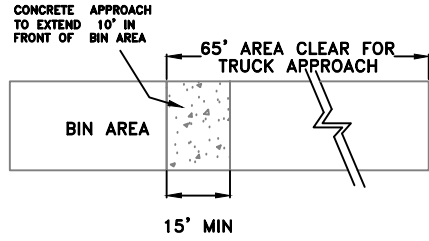
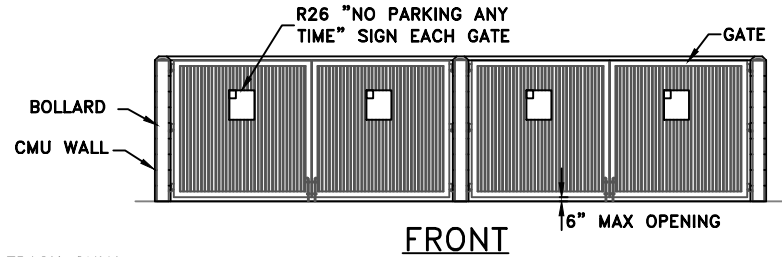
PLAN

CITY OF ROSEVILLE CALIFORNIA ENVIRONMENTAL UTILITIES DEPARTMENT

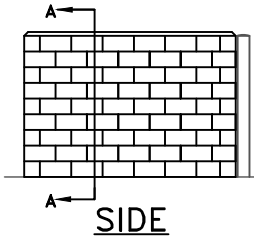
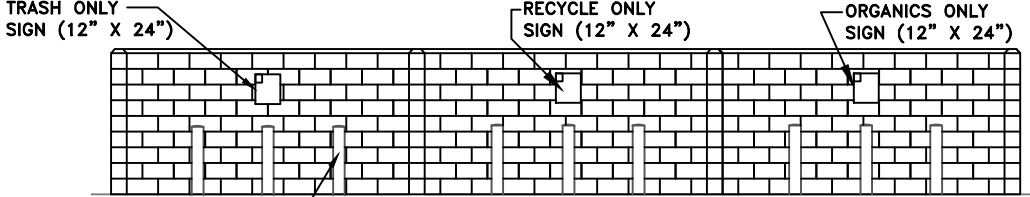
STANDARD TRASH ENCLOSURE

SCALE: NONE
REVISED: JANUARY 2025
DRAWN BY: J THOMPSON
APPROVED BY: RICHARD PLECKER

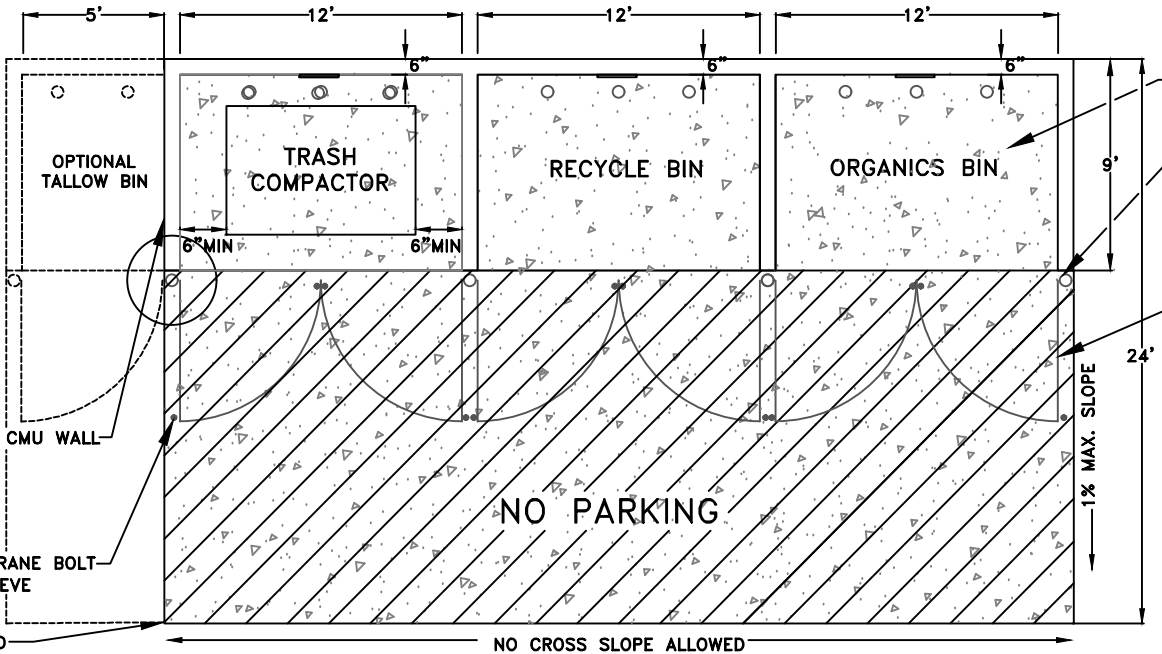
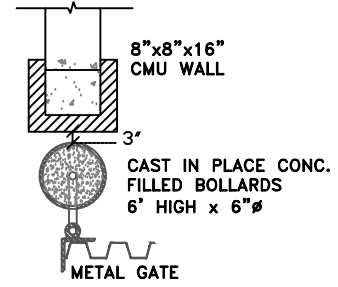
SW-1



- NOTES:**
1. SINGLE ENCLOSURE IS 12' WIDE (INTERIOR)
 2. THE EXTERIOR FINISH AND COLOR OF THE ENCLOSURE SHALL MATCH THE BUILDING PER THE DESIGN REVIEW PERMIT EXHIBITS AND/OR CONDITIONS OF APPROVAL
 3. GREASE/TALLOW BIN ENCLOSURE MAY BE ATTACHED TO THE TRASH ENCLOSURE OR BE CONSTRUCTED SEPARATELY. THE GREASE/TALLOW BIN MUST NOT BE LOCATED WITHIN THE TRASH/RECYCLING ENCLOSURE.



6' x 6"Ø CONC. FILLED BOLLARDS AT 3' O.C. (3' HIGH, 3' BURIED BELOW GROUND). SEE DETAIL ST-38A



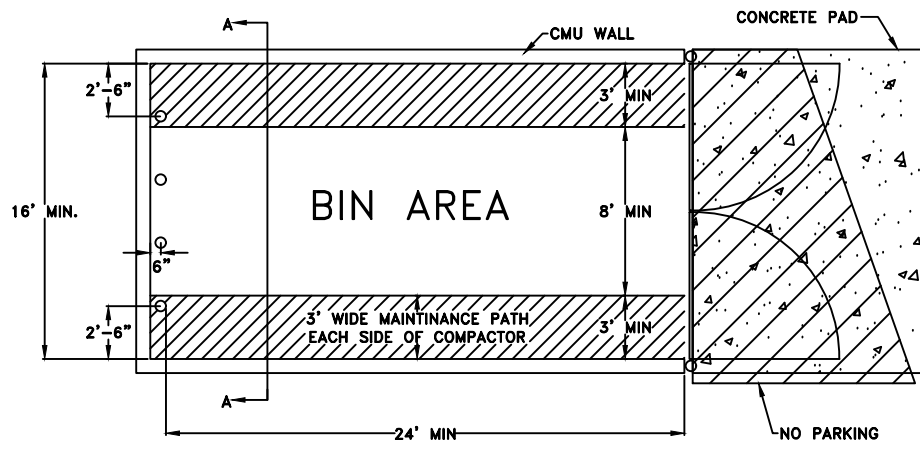
REINFORCED CONCRETE APPROACH AND INTERIOR SHALL BE 6" THICK MIN. PAINTED "NO PARKING" 12" LETTERS WITH 4" DIAGONAL LINES

Richard D. Plecker
 RICHARD PLECKER
 ENVIRONMENTAL UTILITIES DIRECTOR

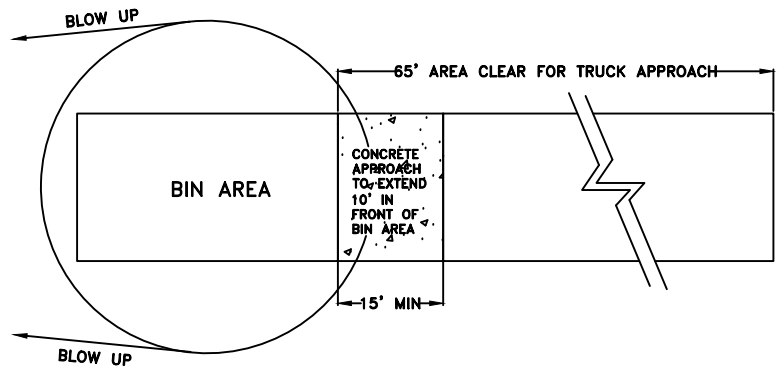
CITY OF ROSEVILLE CALIFORNIA ENVIRONMENTAL UTILITIES DEPARTMENT

FRONT LOADING COMPACTOR ENCLOSURE

SCALE: NONE
 REVISED: JANUARY 2025
 DRAWN BY: J. THOMPSON
 APPROVED BY: RICHARD PLECKER



PLAN
COMPACTOR BIN



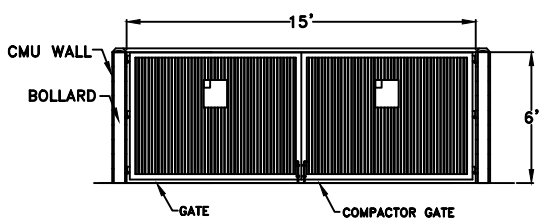
PLAN
BIN & APPROACH

NOTES:

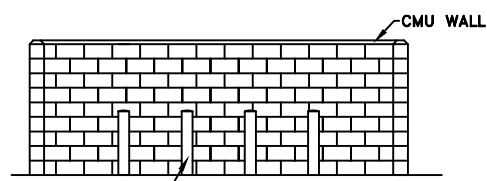
1. APPROACH SHALL BE 6" THICK REINFORCED CONCRETE SLAB ON GRADE. IT SHALL BE PAINTED "NO PARKING" IN 12" LETTERS AND STRIPED WITH 4" DIAGONAL LINES.
2. THE EXTERIOR FINISH AND COLOR OF THE ENCLOSURE SHALL MATCH THE BUILDING PER THE DESIGN REVIEW PERMIT EXHIBITS AND/OR CONDITIONS OF APPROVAL

Richard D. Plecker

RICHARD PLECKER
ENVIRONMENTAL UTILITIES DIRECTOR



FRONT



6" x 6" CONC. FILLED
BOLLARDS AT 3' O.C.
(3' HIGH, 3' BURIED
BELOW GROUND)

SECTION A
BOLLARD CONFIGURATION

ELEVATIONS

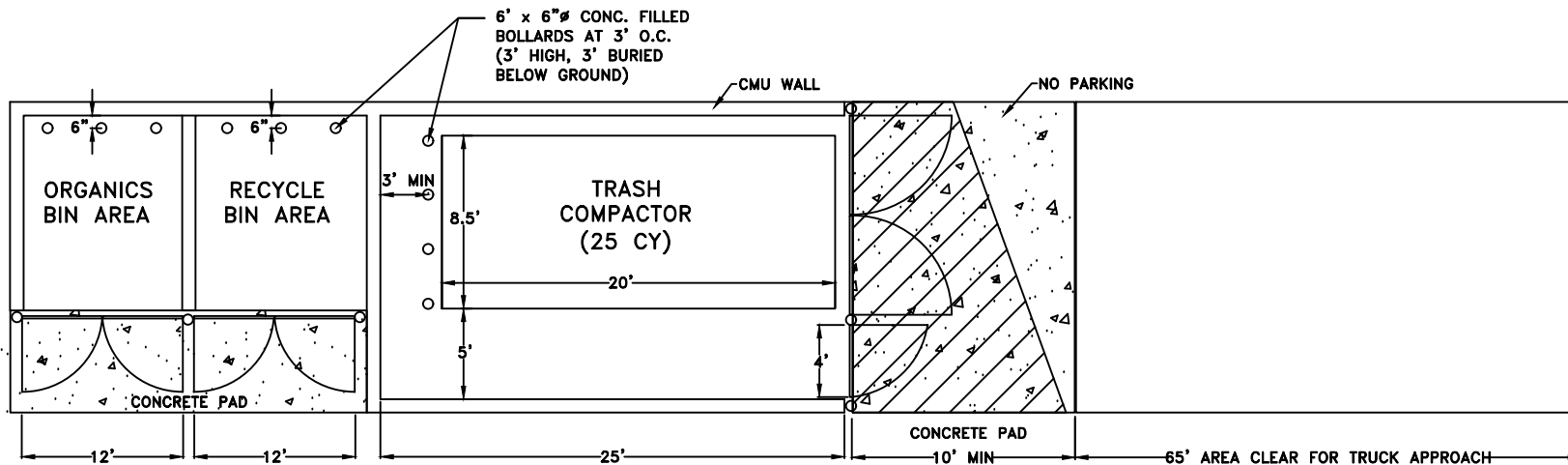


ENVIRONMENTAL UTILITIES
DEPARTMENT

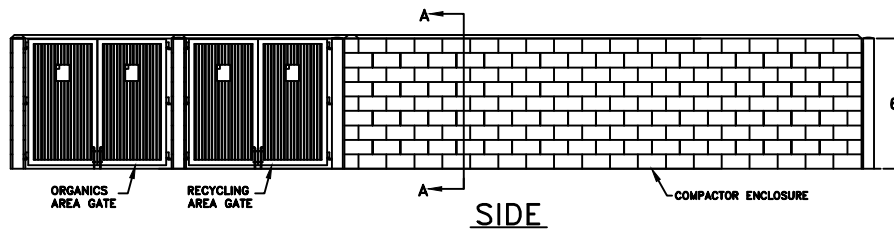
**COMMERCIAL
COMPACTOR ENCLOSURE**

SCALE: NONE
REVISED: JANUARY 2025
DRAWN BY: R. VAN NESS
APPROVED BY: RICHARD PLECKER

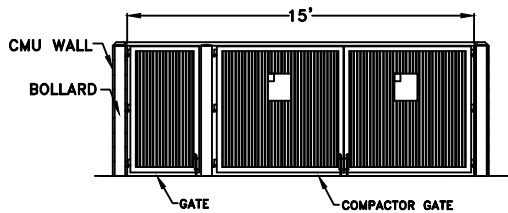
SW-3



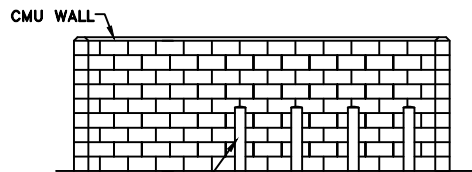
PLAN
COMPACTOR BIN



SIDE



FRONT



6" x 6" Ø CONC. FILLED
BOLLARDS AT 3' O.C.
(3' HIGH, 3' BURIED
BELOW GROUND)

SECTION A
BOLLARD CONFIGURATION
(TRASH COMPACTOR)

NOTES:

1. APPROACH SHALL BE 6" THICK REINFORCED CONCRETE SLAB ON GRADE. IT SHALL BE PAINTED "NO PARKING" IN 12" LETTERS AND STRIPED WITH 4" DIAGONAL LINES.
2. THE EXTERIOR FINISH AND COLOR OF THE ENCLOSURE SHALL MATCH THE BUILDING PER THE DESIGN REVIEW PERMIT EXHIBITS AND/OR CONDITIONS OF APPROVAL
3. IF GREASE/TALLOW BIN IS REQUIRED, SEE SW-1 AND SW-2 FOR DETAILS

Richard D. Plecker

RICHARD PLECKER
ENVIRONMENTAL UTILITIES DIRECTOR

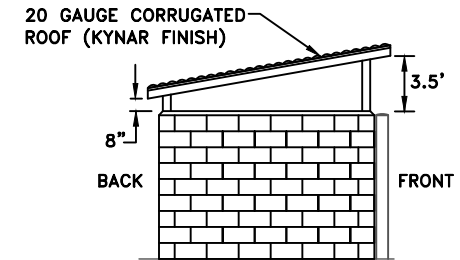
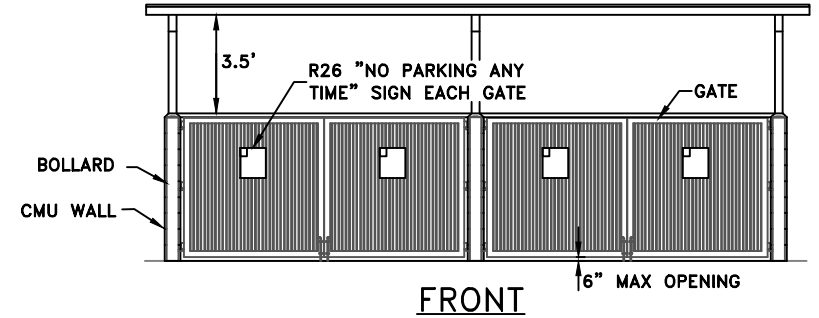
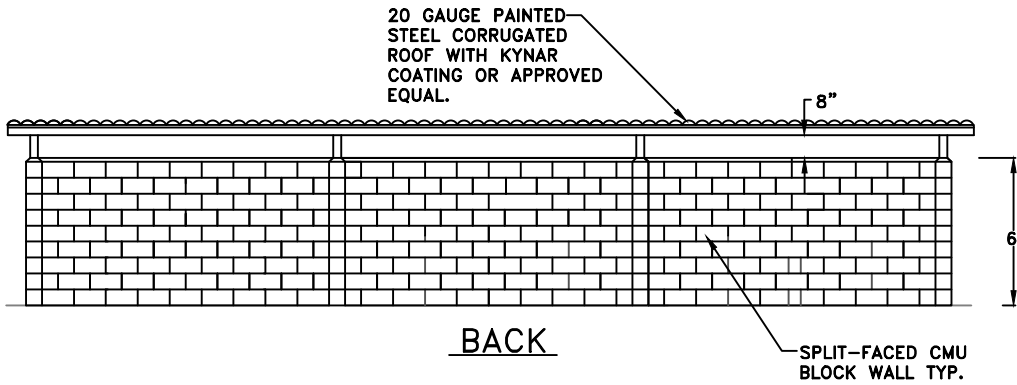


ENVIRONMENTAL UTILITIES
DEPARTMENT

**RESIDENTIAL/COMMERCIAL
COMPACTOR ENCLOSURE**

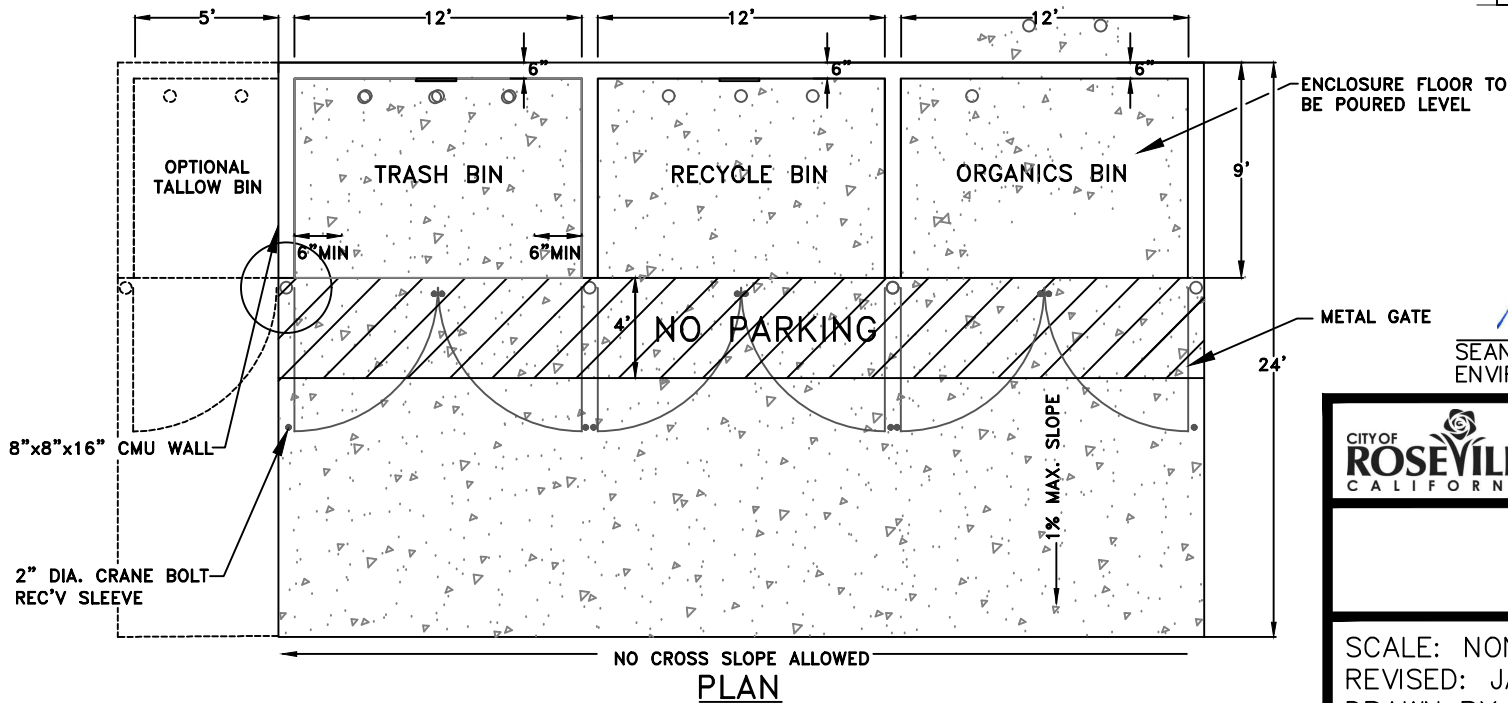
SCALE: NONE
REVISED: APRIL 2022
DRAWN BY: D.SAMUELSON
APPROVED BY: RICHARD PLECKER

SW-4



NOTES:

1. THE EXTERIOR FINISH AND COLOR OF THE ENCLOSURE SHALL MATCH THE BUILDING PER THE DESIGN REVIEW PERMIT EXHIBITS AND/OR CONDITIONS OF APPROVAL
2. GREASE/TALLOW BIN ENCLOSURE MAY BE ATTACHED TO THE TRASH ENCLOSURE OR BE CONSTRUCTED SEPARATELY. THE GREASE/TALLOW BIN MUST NOT BE LOCATED WITHIN THE TRASH/RECYCLING ENCLOSURE.



Sean Bigley
 SEAN BIGLEY
 ENVIRONMENTAL UTILITIES DIRECTOR

CITY OF ROSEVILLE CALIFORNIA ENVIRONMENTAL UTILITIES DEPARTMENT

COVERED TRASH ENCLOSURE

SCALE: NONE
 REVISED: JANUARY 2026
 DRAWN BY: J. VAROZZA
 APPROVED BY: SEAN BIGLEY

SW-5